



# *Professional Services Procurement Bulletin 2008-02 Henderson, Daviess & Ohio Counties*

---

<b>COUNTY</b>	<i>Henderson, Daviess &amp; Ohio</i>
<b>ROUTE</b>	<i>I-69 Spur (Audubon Parkway), I-66 Spur (Natcher Parkway), Daviess County Outer Loop (Interstate Connector) to the William Natcher Bridge.</i>
<b>DISTRICT</b>	<i>2-Madisonville</i>
<b>ITEM NO</b>	<i>N/A</i>
<b>PROJECT DESCRIPTION</b>	<i>Strategic Corridor Planning Study to evaluate the Audubon Parkway from the Pennyriple Parkway (Future I-69) in Henderson to Owensboro and the William H. Natcher Parkway from Owensboro to the Western Kentucky Parkway (Future I-66) to determine the improvements needed to bring the corridors up to current interstate standards to become spurs to the I-66 and I-69 high priority corridors, as well as a more comprehensive study of an Interstate Connector between the Audubon Parkway (I-69 Spur), William Natcher Parkway (I-66 Spur), and US 231/US 60 to the William Natcher Bridge, to include evaluating the adequacy of the existing bypass to serve this purpose.</i>
<b>PROJECT MANAGER</b>	<i>Jim Wilson, P.E.</i>
<b>USER DIVISION</b>	<i>Planning</i>
<b>APPROXIMATE FEE</b>	<i>\$600,000.00</i>
<b>PROJECT FUNDING</b>	<i>Federal and State Funds</i>

<b>PURPOSE AND NEED</b>	<i>The 1991 Intermodal Surface Transportation Efficiency Act (ISTEA) identified Corridor 3 (I-66) and Corridor 18 (I-69) as high priority corridors on the National Highway System. A national study completed in 1994 concluded that construction of I-66 from the west to east coast of the United States was not feasible, but that individual segments of the corridor could be desirable from a state or regional perspective. A 1997 state study concluded that I-66 across Kentucky was feasible. A national study was completed in 1995 which concluded that construction of I-69 from Canada to Mexico was feasible. This project would provide an interstate spur from Owensboro to each of these high priority corridors, as well as an Interstate Connector between the I-69 Spur, I-66 Spur, and the William Natcher Bridge over the Ohio River, improve traffic flow between Owensboro, Henderson, Madisonville and Bowling Green, and enhance economic development in this portion of Western Kentucky.</i>
<b>PROJECT LENGTH</b>	<i>Approximately 78 miles</i>
<b>DBE REQUIREMENT</b>	<i>The Consultant team shall include a DBE Participation Plan with their response to announcement. An additional page will be allowed with the project approach in the response to announcement to convey this plan. A maximum of 4 points will be considered in the evaluation factors for the DBE Participation Plan.</i>
<b>SCOPE</b>	<i>The selected consultant will provide engineering services for the completion of a strategic corridor planning study to identify and evaluate potential improvement options to bring the Audubon Parkway and Natcher Parkway (from Owensboro to the Western Kentucky Parkway) up to interstate standards for inclusion as spurs to the I-69 and I-66 routes, respectively. In addition, the study will identify and evaluate potential corridors for an Interstate Connector from the I-69 and I-66 Spurs to the William Natcher Bridge across the Ohio River. Activities include but may not be limited to an inventory of existing conditions, establishing project purpose and goals, proposing and analyzing alternate improvement options and/or corridors, developing a categorical exclusion document for acceptance of the spurs into the interstate system, developing possible design exceptions, developing a master plan for prioritizing improvements, conducting public involvement activities throughout the study process, making recommendations, and writing a technical report(s) to document the study process and results.</i>

<b>METHOD OF DESIGN</b>	<i>N/A</i>
<b>SPECIAL INSTRUCTIONS</b>	<i>None</i>
<b>AVAILABLE STUDIES</b>	<p><i>I-69 Spur (Audubon Pkwy) I-66 Spur (Natcher Pkwy), Daviess Co Outer Loop Available KYTC Studies:</i></p> <p><i>The following studies are available by clicking on the link:</i></p> <p><i><u><a href="#">Transamerica Transportation Corridor Feasibility Study (Link)</a></u></i></p> <p><i><u><a href="#">Southern Kentucky Corridor I-66 Economic Justification and Financial Feasibility (CH1) (Link)</a></u></i></p> <p><i><u><a href="#">Southern Kentucky Corridor I-66 Economic Justification and Financial Feasibility (CH2) (Link)</a></u></i></p> <p><i><u><a href="#">Southern Kentucky Corridor I-66 Economic Justification and Financial Feasibility (CH3) (Link)</a></u></i></p> <p><i><u><a href="#">Overview of Existing Conditions-Eddyville to Henderson (Link)</a></u></i></p> <p><i>The following studies in hardcopy form will be available for review in the Division of Program Performance, 200 Mero Street, Frankfort, KY between the hours of 9:00 a.m. and 3:00 p.m. from the date of this bulletin, until responses are due. These studies will also be available at Lynn Imaging, 1722 US 127, Frankfort, KY 502-875-8341. Costs will be set by Lynn Imaging.</i></p> <p><i>Corridor 18 Feasibility Study (Hardcopy)</i></p> <p><i>Corridor 18 Special Issues Study (Hardcopy)</i></p> <p><i>I-69 Special Environmental Study - Sections of Independent Utility (Hardcopy)</i></p> <p><i>I-69 Special Environmental Study - Statement of Purpose and Need (Hardcopy)</i></p>
<b>PHOTO-GRAMMETRIC SERVICES</b>	<i>The consultant will be responsible for obtaining aerials or equivalent for meeting displays</i>
<b>STRUCTURE DESIGN</b>	<i>None</i>
<b>GEOTECHNICAL SERVICES</b>	<i>The selected consultant will provide engineering services for a Geotechnical Overview.</i>
<b>TRAFFIC</b>	<i>The selected consultant will be responsible for traffic forecasts.</i>
<b>ENVIRONMENTAL</b>	<i>The selected consultant will prepare the appropriate environmental document. Environmental Footprint and/or Environmental Overview ; Environmental Justice Assessment Overview.</i>
<b>MAP</b>	<i><u>Static Map</u></i>

## ***PREQUALIFICATION REQUIREMENTS***

<p><b><u>Transportation Planning / Corridor Planning</u></b></p>	<ul style="list-style-type: none"> <li>• <i>Highway Planning Services</i></li> <li>• <i>Transportation Corridor and Systems Planning</i></li> <li>• <i>Traffic Forecasting</i></li> </ul>
<p><b><u>Roadway Design</u></b></p>	<ul style="list-style-type: none"> <li>• <i>Rural Roadway Design &gt;\$250,000</i></li> <li>• <i>Urban Roadway Design &gt;\$250,000</i></li> </ul>
<p><b><u>Environmental Aquatic &amp; Terrestrial Ecosystem Analysis</u></b></p>	<ul style="list-style-type: none"> <li>• <i>Fisheries</i></li> <li>• <i>Macroinvertebrates</i></li> <li>• <i>Water Quality</i></li> <li>• <i>Botany</i></li> <li>• <i>Zoology</i></li> <li>• <i>Wetlands</i></li> </ul>
<p><b><u>Environmental Archaeology And Other Services</u></b></p>	<ul style="list-style-type: none"> <li>• <i>Prehistoric</i></li> <li>• <i>Historic</i></li> <li>• <i>Highway Noise</i></li> <li>• <i>Air Quality Analysis</i></li> <li>• <i>Socioeconomic Analysis</i></li> <li>• <i>Cultural-Historic Analysis</i></li> <li>• <i>EIS Writing and Coordination</i></li> </ul>
<p><b><u>Environmental And UST Services</u></b></p>	<ul style="list-style-type: none"> <li>• <i>HAZMAT Preliminary Site Assessment (Phase 1)</i></li> <li>• <i>UST Preliminary Site Assessment</i></li> </ul>
<p><b><u>Geotechnical Services</u></b></p>	<ul style="list-style-type: none"> <li>• <i>Engineering Services</i></li> </ul>

*The selected consultant is expected to meet the scheduled milestone dates*

## *PROJECT SCHEDULE & MILESTONES*

<i>RESPONSE DATE</i>	<i>September 12, 2007 4:30 p.m. (Frankfort Time)</i>
<i>SELECTION COMMITTEE DATE MEETING</i>	<i>October 3, 2007</i>
<i>PRE-DESIGN CONFERENCE</i>	<i>October 15, 2007</i>
<i>TENTATIVE DEADLINE FOR CONSULTANT FEE PROPOSAL</i>	<i>November 12, 2007</i>
<i>CONTRACT NEGOTIATIONS</i>	<i>December 3, 2007</i>
<i>NOTICE TO PROCEED</i>	<i>February 4, 2008</i>
<i>DRAFT REPORT</i>	<i>March 1, 2009</i>
<i>FINAL REPORT</i>	<i>May 1, 2009</i>

## ***EVALUATION FACTORS***

*1. Relative experience of consultant personnel assigned to project team with highway projects for KYTC and/or for federal, local or other state governmental agencies. (10 points)*

*2. Capacity to comply with project schedule. (10 points)*

*3. Past record of performance on projects of similar type and complexity. (10 points)*

*4. Project approach and proposed procedures to accomplish the services for the project. (10 points)*

*5. DBE Participation Plan (4 points)*

*6. Consultant's Kentucky office where work is to be performed. (2 points)*

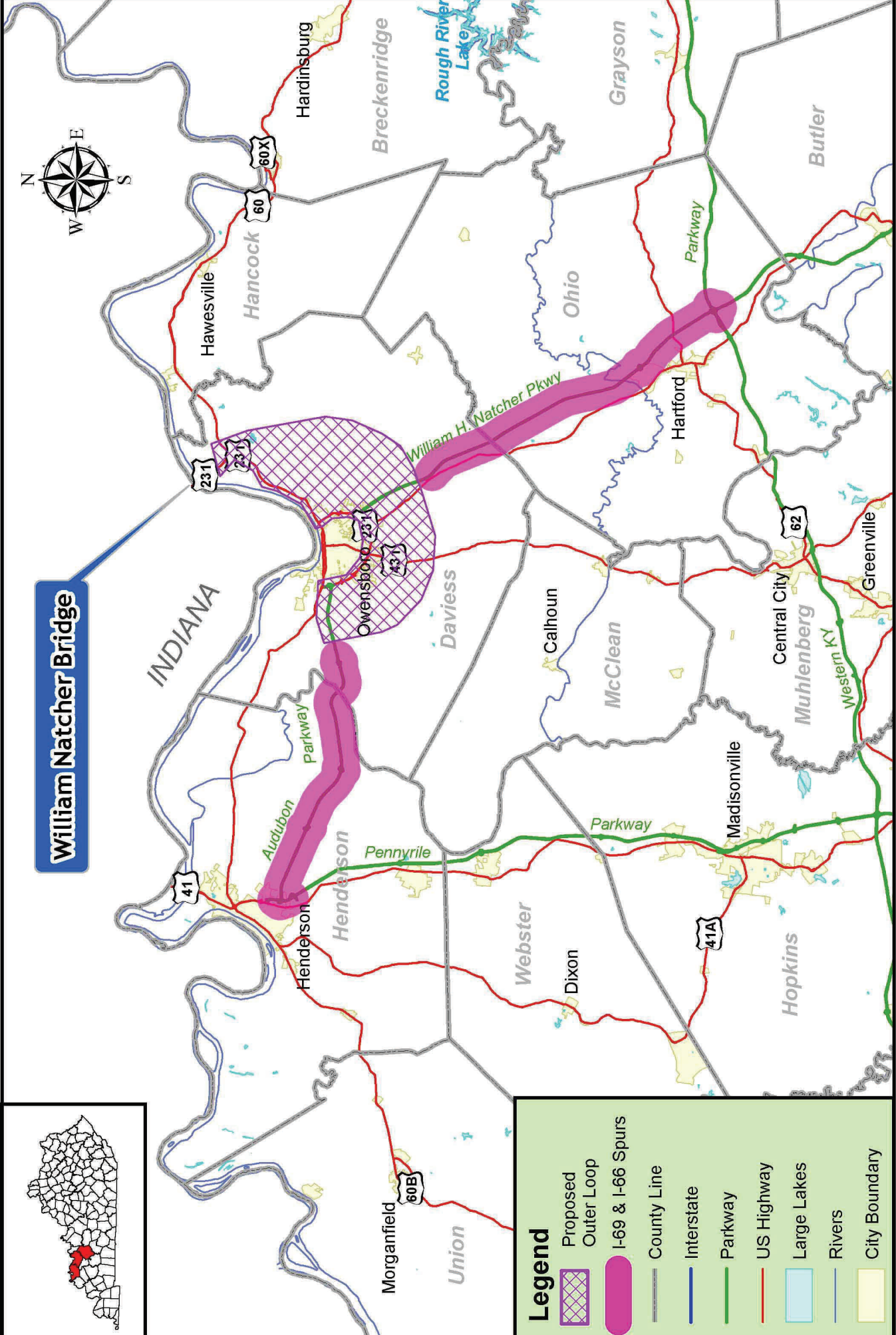
*75% - 100% of work accomplished in Kentucky offices - 2 points*

*26% - 74% of work accomplished in Kentucky offices - 1 point*

*0% - 25% of work accomplished in Kentucky offices - 0 points*

## ***SELECTION COMMITTEE MEMBERS***

- 1. Amy Thomas, P.E., User Division*
- 2. David Martin, P.E., User Division*
- 3. Shari Greenwell, Secretary's Pool*
- 4. Patty Dunaway, Secretary's Pool*
- 5. George Blanford, Governor's Pool*



**William Natcher Bridge**

**I-69 & I-66 Spurs, Daviess County Outer Loop**  
*(Audubon Pkwy., New Interstate Connector, William Natcher Pkwy.)*

Henderson, Daviess & Ohio Counties

10 Miles



**Legend**

	Proposed Outer Loop
	I-69 & I-66 Spurs
	County Line
	Interstate
	Parkway
	US Highway
	Large Lakes
	Rivers
	City Boundary